

CLEARSHIELD ECO

ADVANCED FORMULA WATER-BASED

PERMANENT WATER REPELLENCY AND PROTECTION AGAINST DIRT AND GRIME

ADVANCED PROTECTION FOR POROUS EXTERIOR WALLS, PAVING, ROOF TILES AND EXTERIOR WOOD

Impregnates surfaces for superior water repellency and resistance to dirt, stains and grime using the latest FLUOROCARBON TECHNOLOGY

PERFORMANCE ADVANTAGES

- > Superior water repellence using the latest fluorocarbon technology
- > Excellent stain UV, chemical and abrasion resistant
- > Resistant to dirt, atmospheric pollution, weathering and delays aging
- > Prevents moss and algae growth
- > Permeable to water vapour (breathable)
- > Maintains freeze thaw characteristics
- > Reduces efflorescence
- > Natural finish obtained
- > Solvent free
- > One coat application - reduced labour cost
- > Up to 10 years product performance

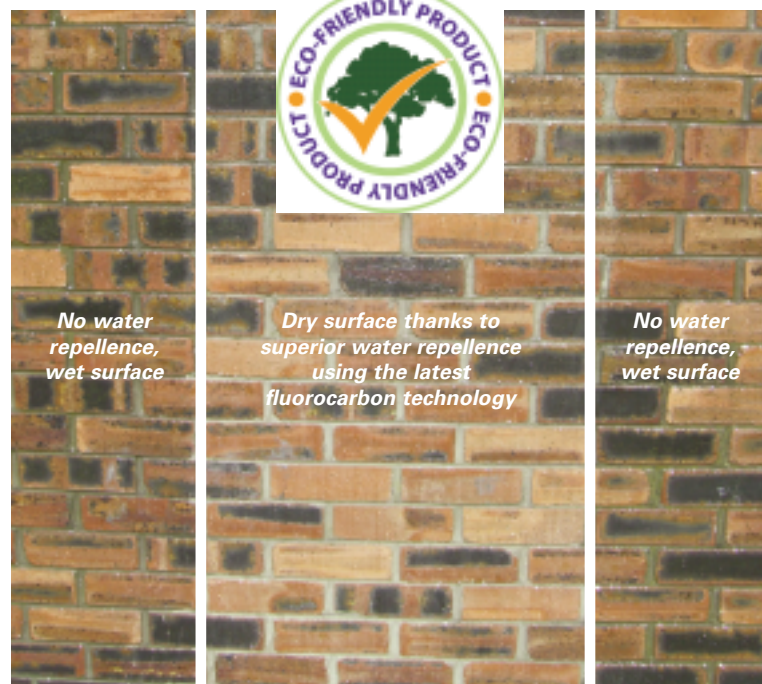
USES

Designed to provide an invisible waterproof protection to porous exterior walls (brickwork, stonework, cement rendering, clay roof tiles, exterior wood treated with preservative etc). Clearshield Eco enhances the durability of the building substrate, fully allowing the surface to 'breathe' whilst providing superior water repellence, stain repellence and maintaining a longer lasting cleaner surface.

> **Do not over-coat with traditional coatings.**

COLOUR RANGE

- > White liquid – when applied produces a natural clear finish.



No water repellence, wet surface

Dry surface thanks to superior water repellence using the latest fluorocarbon technology

No water repellence, wet surface

PACK SIZE

- > 5 and 15 litre screw cap plastic containers.

GUIDE COVERAGE RATES

Granite	15m ² /litre
Slate	15m ² /litre
Dense sandstone	8m ² /litre
Precast concrete	8m ² /litre
Sandstone	5m ² /litre
Facing brickwork	5m ² /litre
Cement render	5m ² /litre
Concrete block paving	5m ² /litre
Concrete blockwork	3m ² /litre
Reconstructed stone	3m ² /litre
Wood	4m ² /litre
Terracotta	8m ² /litre
Clay Tiles	8m ² /litre

NOTE: Britannia Paints recommend a small trial area to ensure correct application levels are used to obtain the required performance properties subjected to the differing porosity levels of porous building materials.

DRYING TIME

- > Depending upon the outside ambient curing temperature: 1-2 hours touch dry and full cure achieved in 7 days.

SHELF LIFE/STORAGE

- > 12 months from date of manufacture if stored correctly in a sealed container.
- > Store between 5°C and 35°C (not above 35°C).
- > Keep container tightly closed when not in use.

PREPARATION

- > **It is very important that the surface is DRY and free from mould growth, dirt and grease.**
- > Algae or fungal deposits should first be removed by power washing the surface and then coat with Britannia's Fungicidal Wash Solution.
- > **Allow to DRY thoroughly before applying Clearshield Eco.**

APPLICATION

- > **Do not over-coat with traditional coatings.**
- > Simply apply using Brush, Roller or low pressure Spray method.
- > Start at the bottom and work up.
- > Apply One flood coat application to saturation point.
- > No coating should be carried out when the substrate temperature is below 5°C or above 35°C.

NOTE: On very highly porous substrates a 2 coat wet on wet application may be required to obtain maximum performance.

Water applied to brick treated with Clearshield Eco (top) and untreated brick (bottom)



EQUIPMENT AND CLEANING

- > Clean all equipment immediately with water after use.

PRECAUTIONS

- > No significant hazard.
- > Keep out of reach of children.
- > In case of contact with eyes wash immediately with plenty of water.
- > Remove splashes from skin with soap and water or a recognised hand cleaner.
- > Protect from freezing.
- > Do not apply product if there is a risk of heavy rain or frost.
- > Ensure good ventilation during application and drying.
- > Wear gloves, goggles and suitable protective clothes.

SAFETY

Good working practice should be followed and safety/walking boards should be utilised where required.

The specification and coverage rates are given in good faith and are based on our experience and knowledge but without liability.

As Britannia Paints Limited has no direct control over the methods employed by the user in applying its products, any warranty either written or implied is given in good faith and can only cover the material itself.

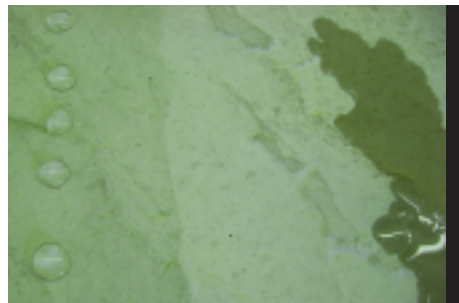
If in doubt regarding any of the above points, please contact our technical services department for advice.

A Material Safety Data Sheet is available on request.

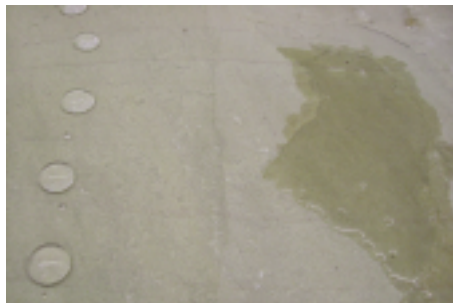
It is the users responsibility to ensure that this data sheet is current prior to using the product.

Brick coated with Clearshield Eco repels the water

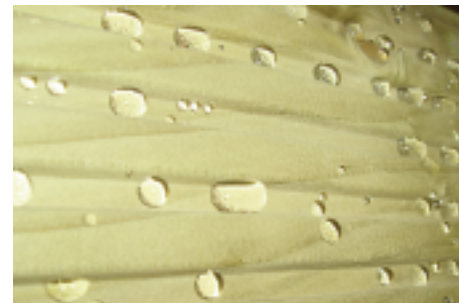
Uncoated brick absorbs liquid virtually immediately



Water applied to precast concrete paving stone treated with Clearshield Eco (left) and untreated (right)



Water applied to natural Indian sandstone paving treated with Clearshield Eco (left) and untreated (right)



Water applied to decking treated with Clearshield Eco



Cert: 8516



Unit 7/8 King Street Trading Estate, Middlewich, Cheshire CW10 9LF
T: 01606 834015 F: 01606 837006 E: sales@britanniapaints.co.uk www.britanniapaints.co.uk

Version 3 / June 2013